

## Catalog

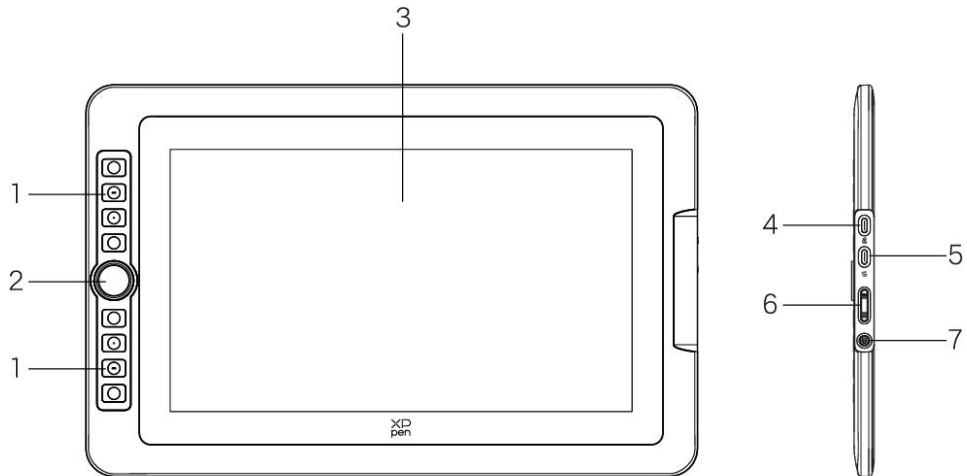
Introduction.....	3
Product Brief .....	3
1、 Product Overview .....	3
2、 Accessories .....	4
3、 Computer USB-C Connection .....	4
4、 Android Phone and Tablet Connection .....	5
5、 Compatibility.....	6
Product Settings .....	6
6、 Driver Download .....	6
7、 Driver Installation .....	7
a) Windows .....	7
b) Mac .....	7
c) Linux .....	8
8、 Driver Function Settings.....	9
Device Setting .....	10
Pen Settings .....	21
Driver settings.....	24
9、 Driver Uninstallation .....	25

a) Windows .....	25
b) Mac .....	25
c) Linux .....	25
FAQ .....	25

# Introduction

## Product Brief

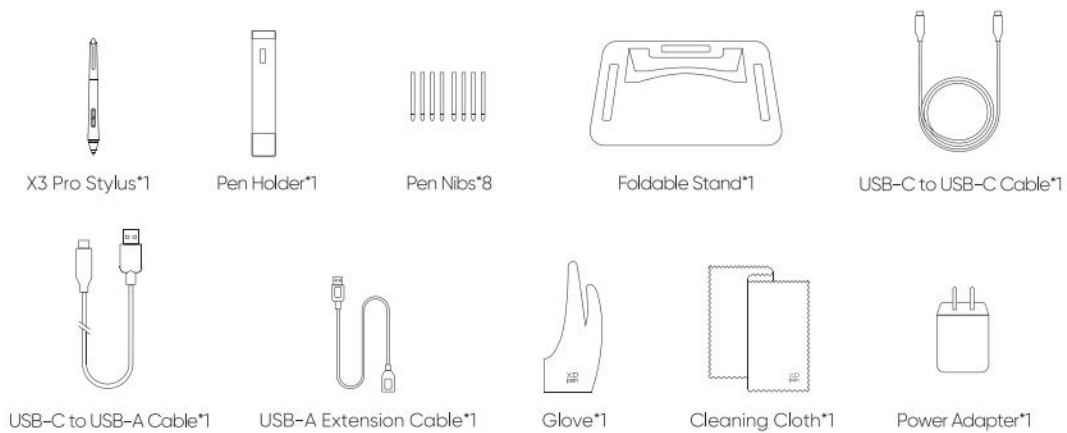
### 1、 Product Overview



1. Shortcut Key
2. Roller
3. Display/Work area
4. USB-C to USB-A port
5. Full-featured USB-C port
6. Brightness up / down
7. Power Key/ Indicator Light

Click the power button to turn it on, and the blue light is steady on

## 2、 Accessories



- X3 Pro Smart Chip Stylus\*1
- Pen Holder\*1
- Pen Nibs\*8
- S01 foldable stand\*1
- USB-C to USB-C Cable\*1
- USB-C to USB-A Cable\*1
- USB-A Extension Cord\*1
- Glove\*1
- Cleaning Cloth\*1
- Power Adapter\*1

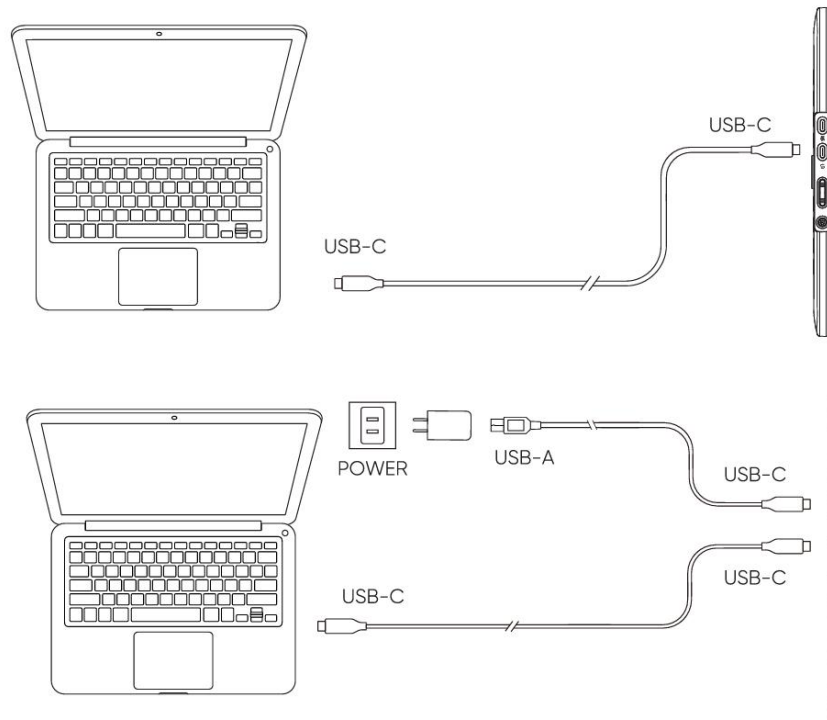
\*Image is for illustration only. Please refer to the actual product.

\*Due to different product specifications, the power adapter may not be standard. Please refer to the actual product received.

## 3、 Computer USB-C Connection

- 1) Please connect the computer and the drawing display via the USB-C to USB-C cable.

- 2) If the drawing display does not light up, please connect the drawing display via the USB-A to USB-C cable to the power adapter for power supply.

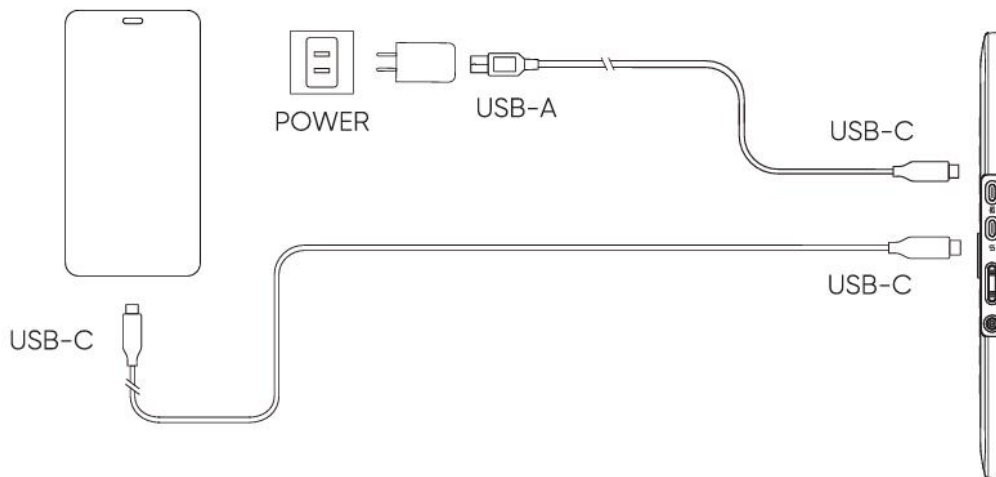


\*Due to different product specifications, the power adapter may not be standard. Please refer to the actual product received.

## 4、 Android Phone and Tablet Connection

Visit the XPPen website for compatible models

- 1) Connect the drawing display to your device directly with the USB-C Cable.
- 2) Connect the power adapter to your device with the USB-C to USB-A cable.



\*Please refer to the official website for compatible mobile phone models.

\*Due to different product specifications, the power adapter may not be standard. Please refer to the actual product received.

## 5、 Compatibility

Windows 7 or later

macOS 10.13 or later

ChromeOS 88 or later

Android (USB3.1 DP1.2)

Linux

## Product Settings

### 1、 Driver Download

- 1、 Make sure your computer and device are connected
- 2、 Log in to the XPPen official website ([www.xp-pen.com.cn](http://www.xp-pen.com.cn)), click on the "Support" page and then download. Choose a product model and download the latest driver according to your computer system.
- 3、 Open the driver and set Parameters and test product functionality

## 2、 Driver Installation

### Notes:

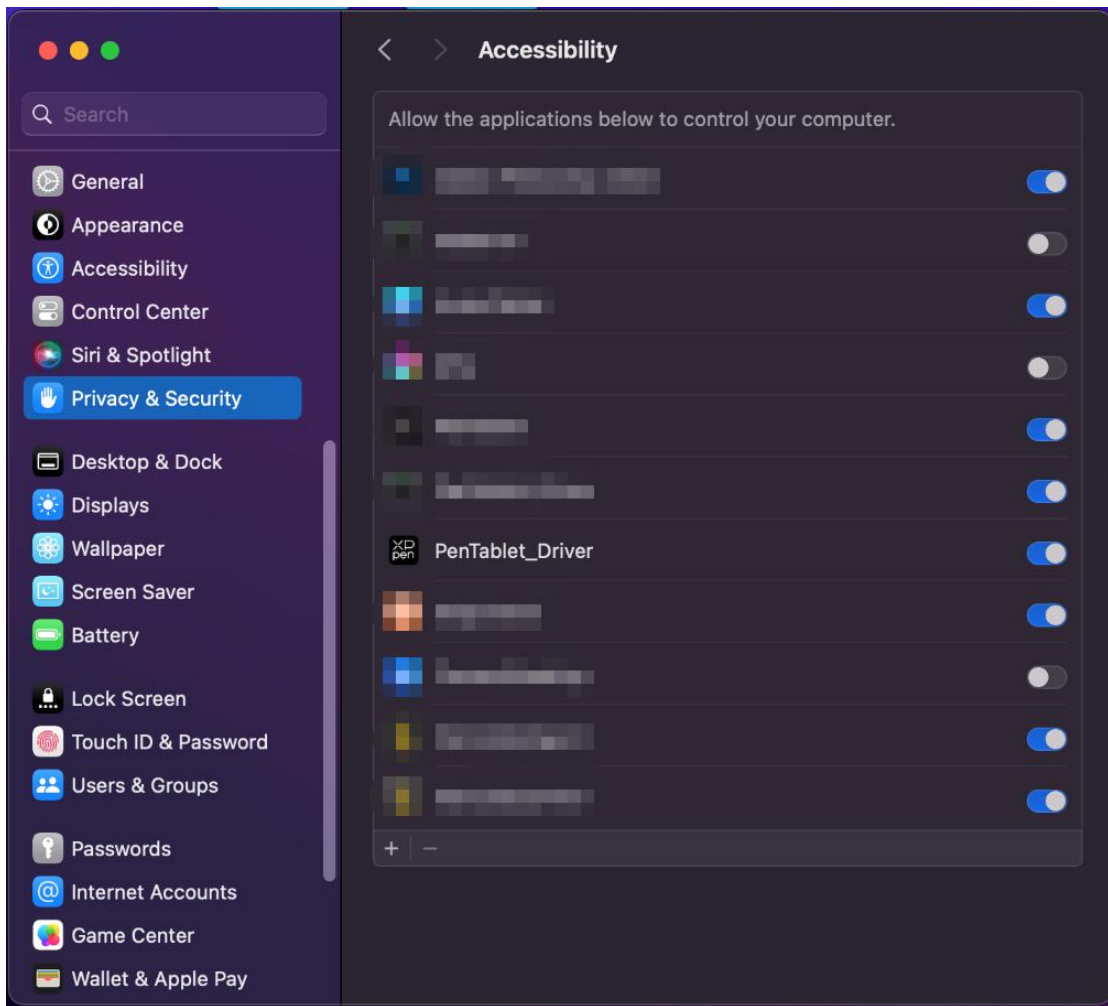
- Before installation, please turn off all anti-virus software and graphics software.
- Uninstall drivers (if any) for other drawing displays before the installation.
- Restart your computer after the installation is completed.
- For the best performance for your device, we recommend you to install the latest driver.

### a) Windows

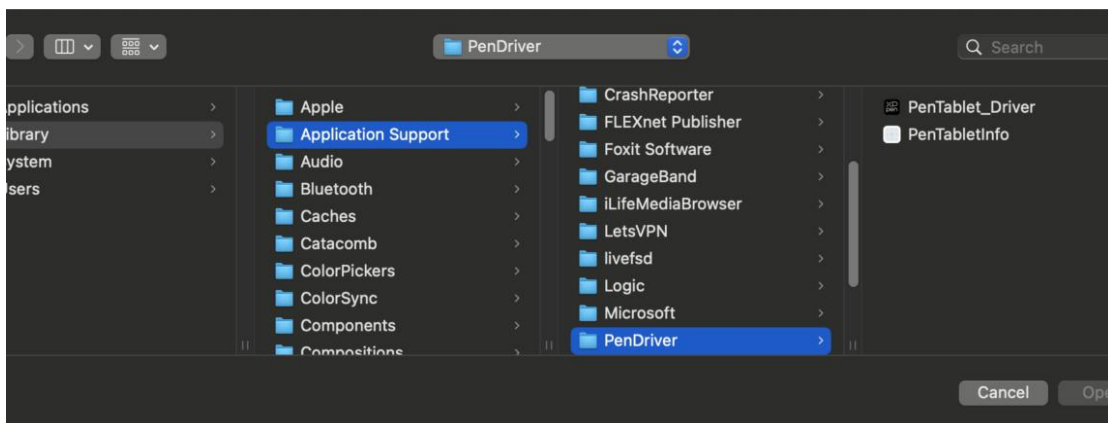
Unzip file. Run the "exe" file as administrator, and follow the prompts to complete the installation.

### b) Mac

Unzip file, run the "pkg" file and follow the prompts to complete the installation. Go to System Settings -> Privacy & Security -> Accessibility, please ensure that the PenTabletDriver option is checked; Otherwise, the device and driver may not function properly.



If there is no PenTablet\_Driver on the list, go to resource Library -> Application Support -> PenDriver to add the driver manually.



### c) Linux

**DEB:** Enter command "sudo dpkg -i". Drag the installation file to the window and execute the command;

**RPM:** Enter command "sudo rpm -i". Drag the installation file to the window and

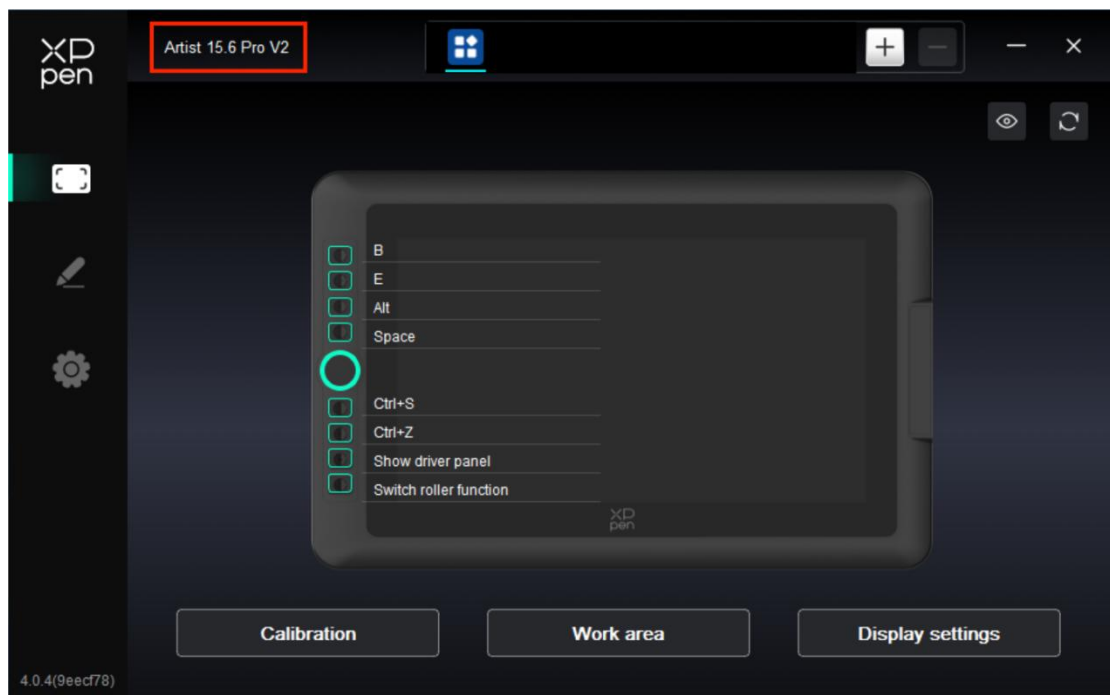


execute the command;

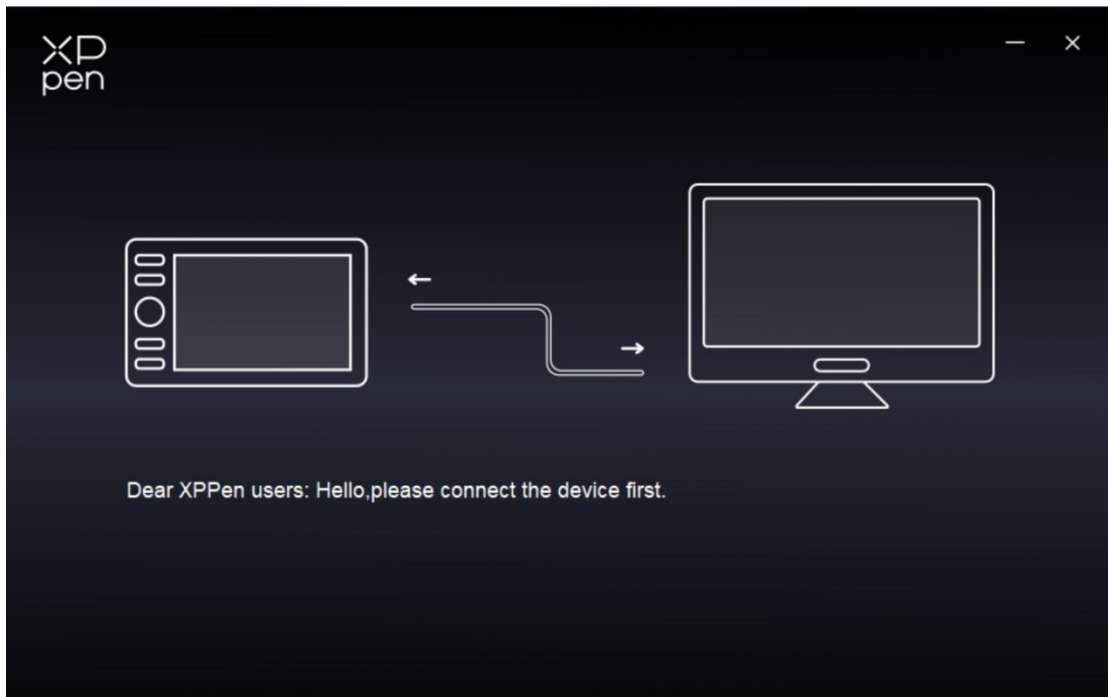
**Tag.gz:** Unzip file. Enter command "sudo" . Drag "install.sh" to the window and execute command.

### 3、 Driver Function Settings

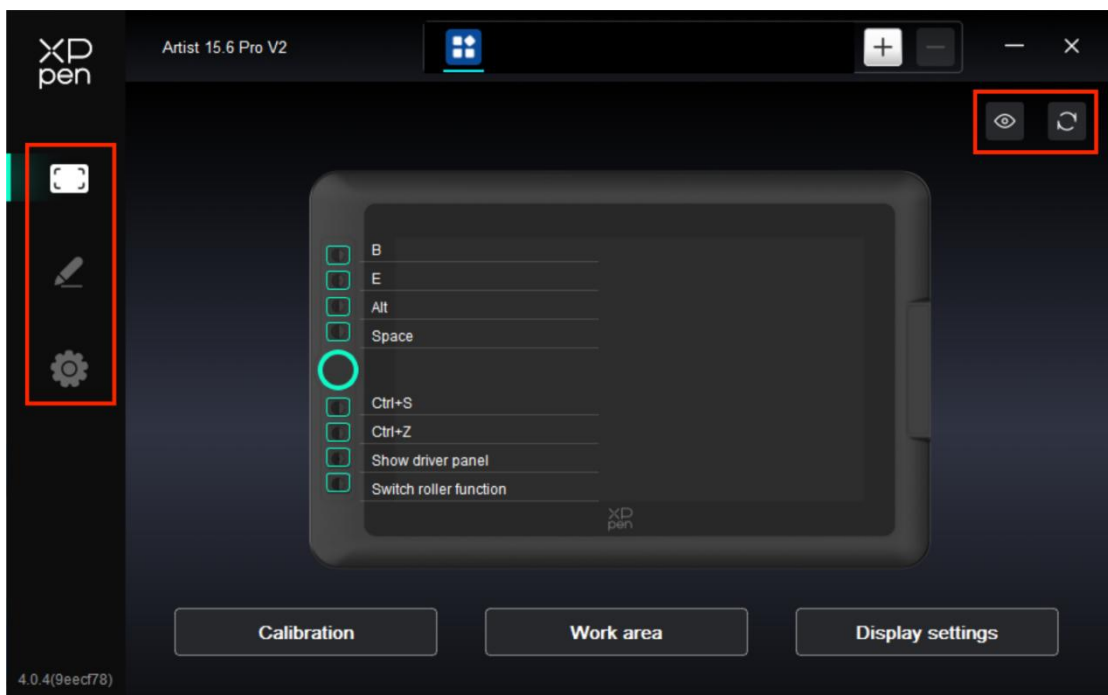
- Before using, ensure that your device is successfully connected to your computer; If the device is connected to your computer successfully, the device name will be displayed in the upper left corner of the driver.



- If the device is not connected or the connection fails, you can see the following prompt. In this case, try to restart your computer or the driver, or contact our service staff for support.



## Device Setting



- Click the icons on the left menu bar to switch drive functions, from top to bottom they are **Device Settings**, **Pen Settings**, and **Drive Settings**.
- Click the Hide/Show button in the upper right corner to turn on/off the function preview of the shortcut keys.
- Click the restore defaults button in the upper right corner to restore the device's default settings.

## 1. Calibration

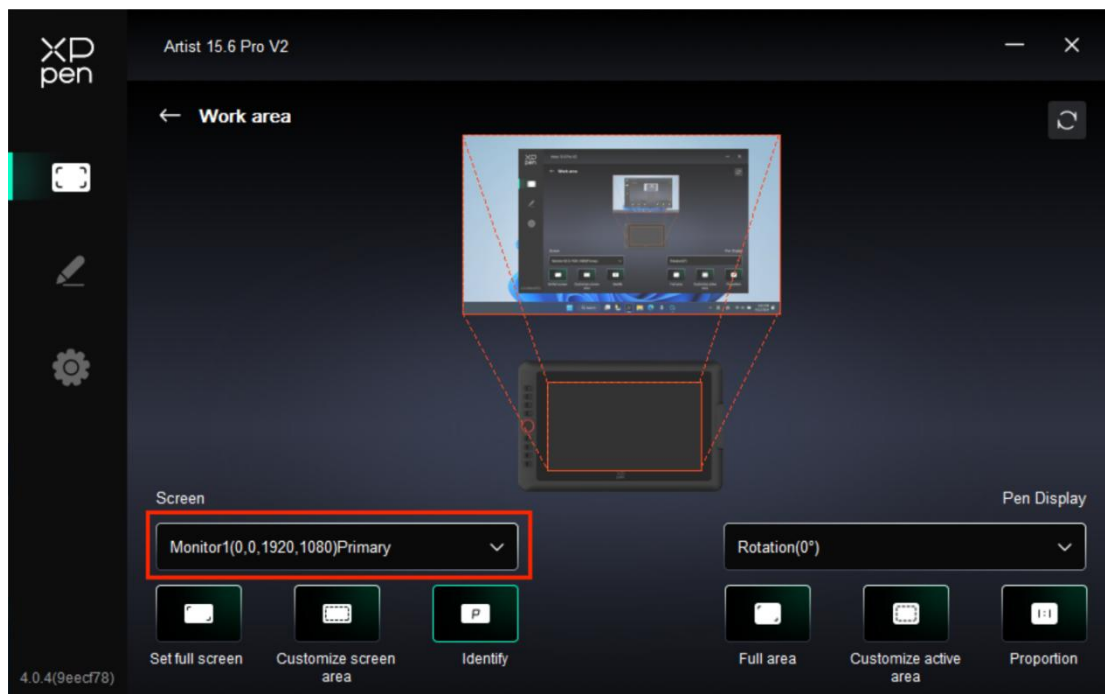
Due to individual differences in stylus-holding habits and the angle at which the stylus is held, please use the stylus in your usual manner. To ensure that the product better fits your personal usage habits, click the center of the Red Cross on the device screen with the stylus to calibrate the offset between the stylus and the cursor.

## 2. Work Area

Define the mapping between the device's work area and the screen display area.

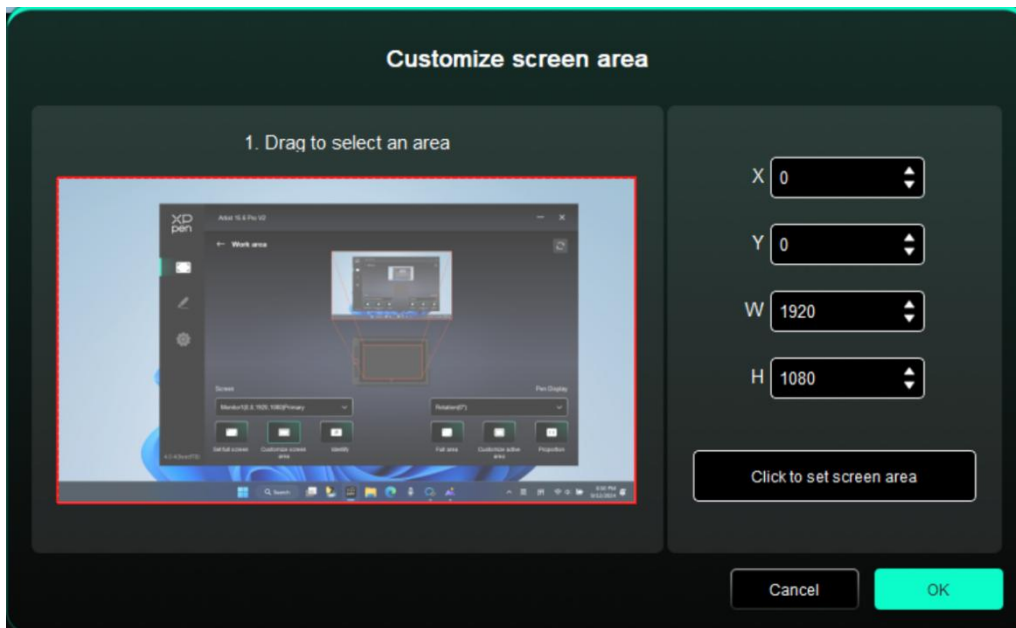
### 2.1. Screen

- You can set the mapping between the display area of the current monitor and the device.
  - a) If multiple monitors are used in duplicate mode, the work area of the device will be mapped to all monitors. When the pen moves in the work area, the cursor on all monitors will move at the same time.
  - b) If multiple monitors are used in extend mode, go to monitor tabs to select one of the monitors that the work area of the device will be mapped to.



- Set the mapped area of the monitor:
  - a) Set full screen: The whole area of the selected monitor.

b) Customize screen area:

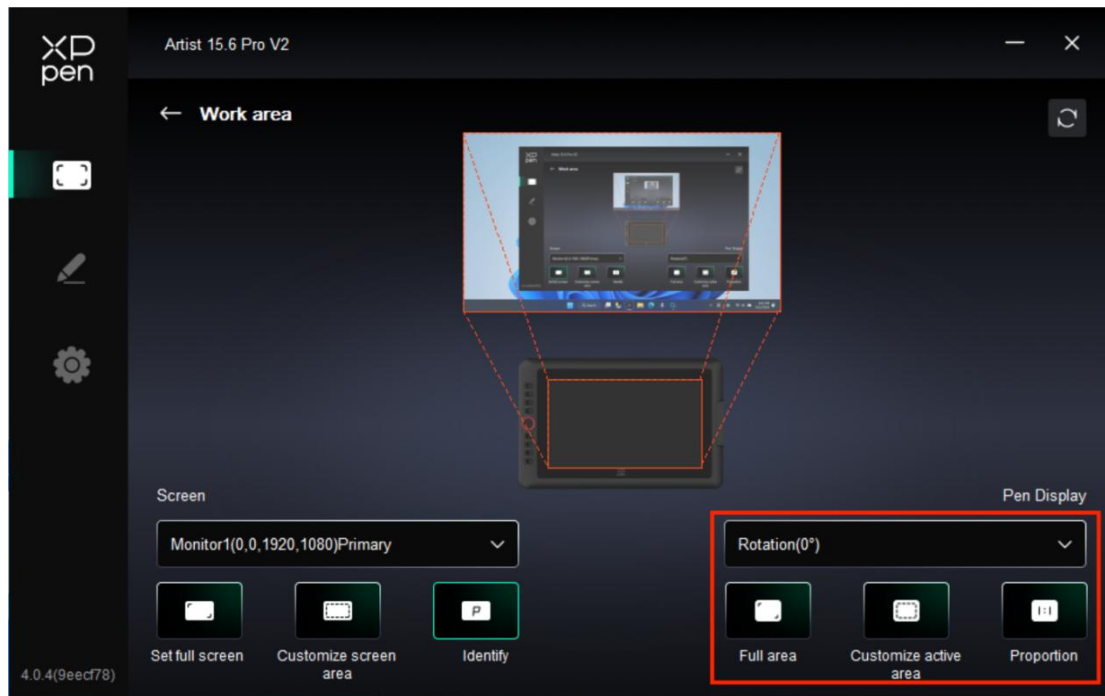


- Drag to select an area: Drag the cursor from one point to another on the screen.
- Coordinates: Manually enter coordinates in the corresponding input boxes for X, Y, W and H.
- Click to set screen area: Click the upper left corner position and lower right corner position to select on the monitor.

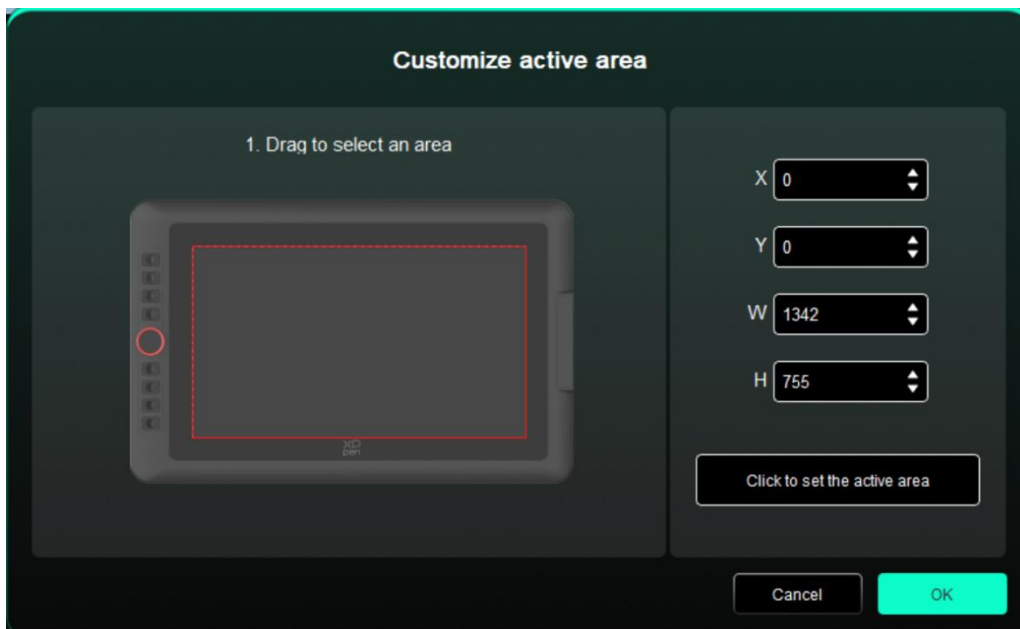
c) Identify:

Identify all connected monitors. The numeric identifier will be displayed in the lower left corner of each monitor.

## 2.2. Pen Display



- Set the device working area:
  - a) Full area: The whole work area of the device is available.
  - b) Customize active area:



- Drag to select an area: Drag the cursor from one point to another on the device.
- Coordinates: Manually enter coordinates in the corresponding input boxes for X, Y, W and H.
- Click to set active area: Use stylus to click the upper left corner position

and lower right corner position on your device.

- c) Proportion: Scale your device's work area and selected display area proportionately.

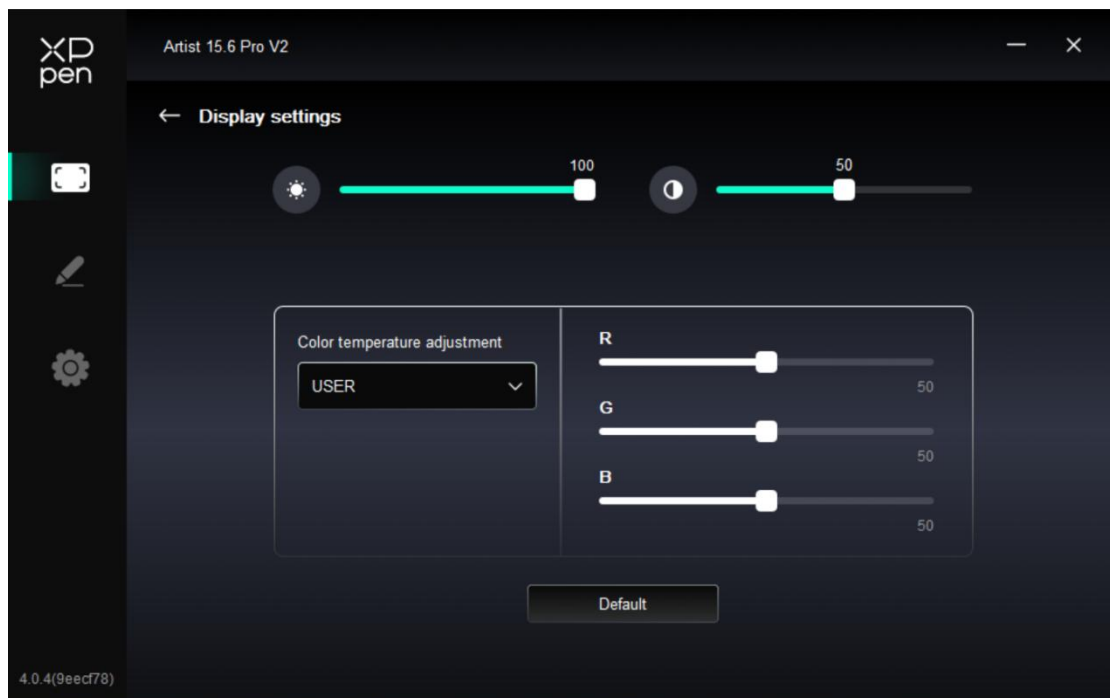
If you draw a circle on the device after selecting proportions, a circle will appear on the screen. However, part of the work area may not be used. But if you don't choose the proportion and draw a circle, the circle may change into an ellipse on the screen.

- Rotation:

You can set the device to 0°, 90°, 180° and 270° clockwise for use.

Left-handed mode: Rotate 180°.

### 3. Display Setting



- Brightness, Contrast

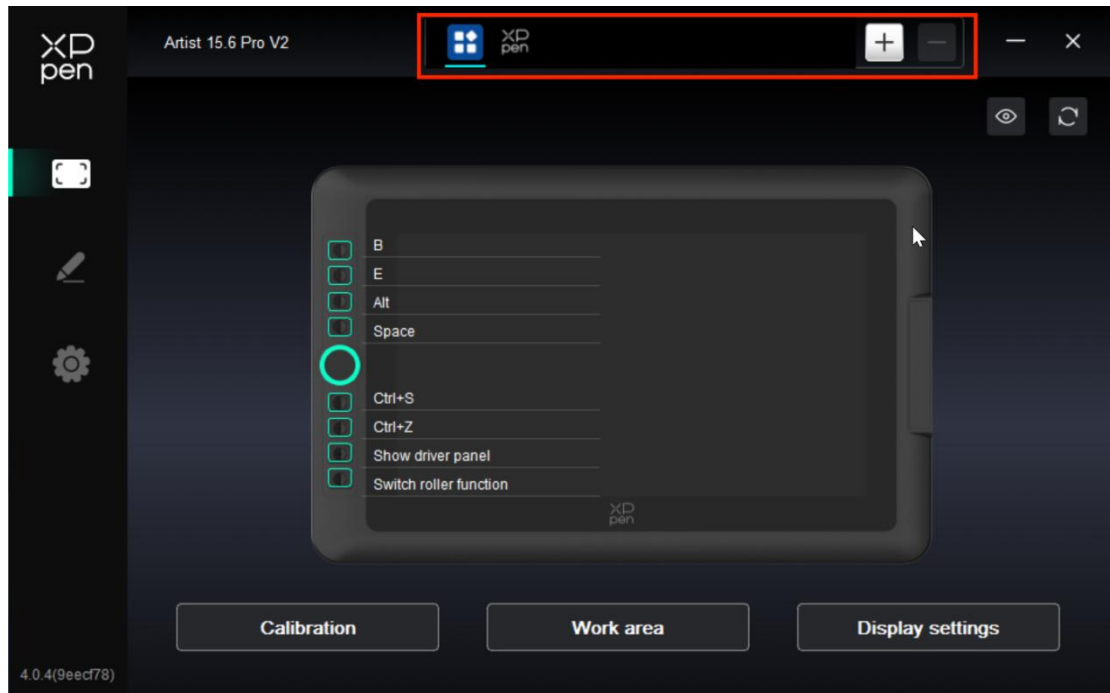
Slide the corresponding slider to adjust the brightness and contrast.

- Color temperature

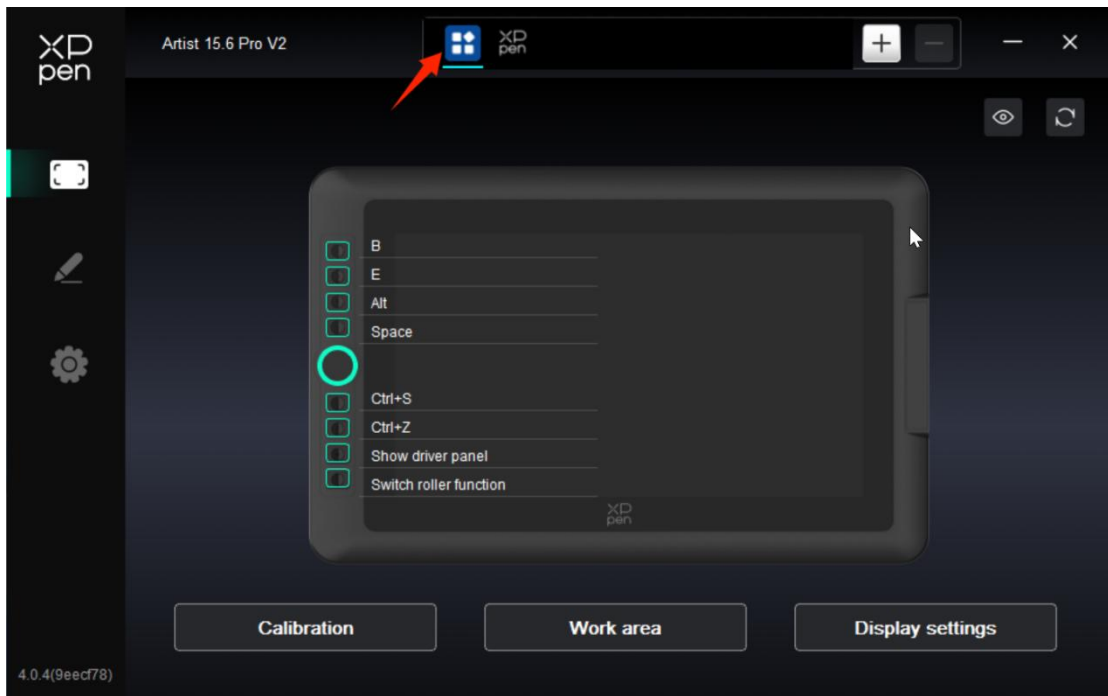
The driver provides five modes: 5000K, 6500K (default), 7500K, 9300K, USER;

In particular, in USER mode, the color temperature can be customized by adjusting the values of R, G, and B.

## 4. Application

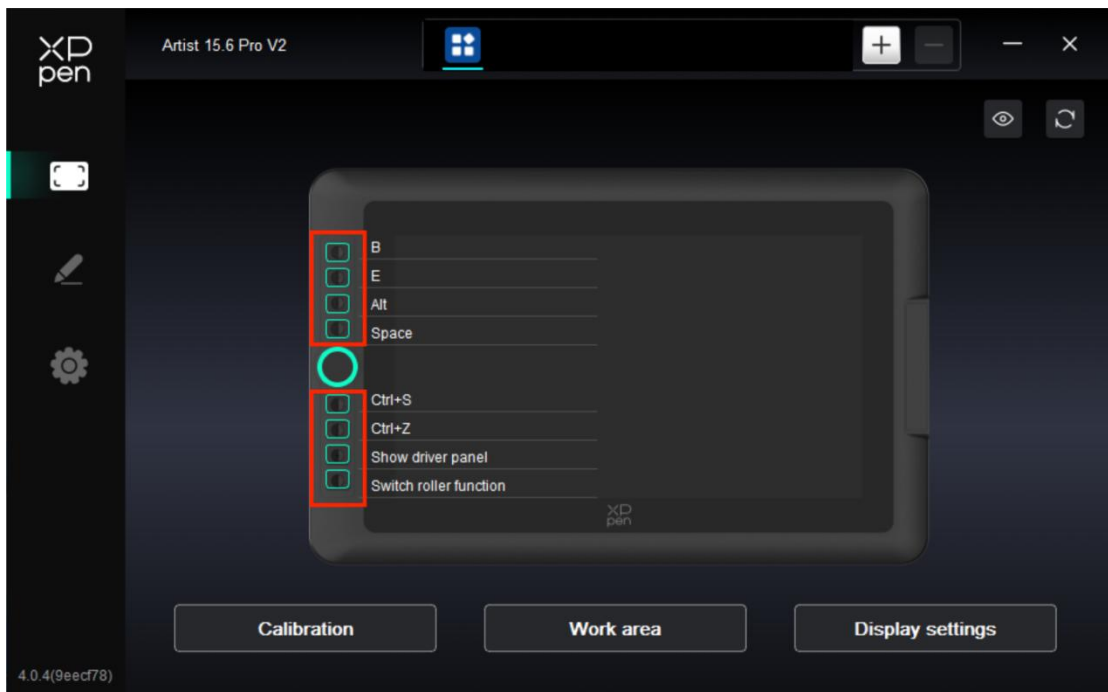


- You can add up to 7 applications from the application list above as needed. The specific steps for adding are as follows:
  1. Click the + icon on the top right of the application bar to open the application list;
  2. Select an application to be added from the running applications or click Browse to add from the installed applications;
  3. Click "OK" to add the selected application;
  4. Select an added application, and click the - icon on the top right of the application bar to delete the application.
  
- Tick one of the applications, then you can customize its **shortcut key**, **scroll wheel** and **pen key** functions. The change is valid only when you use the application. When switching between different applications, the driver will automatically recognize and switch to the corresponding Settings.



- If you select all other applications, it will apply to other uncustomized applications.

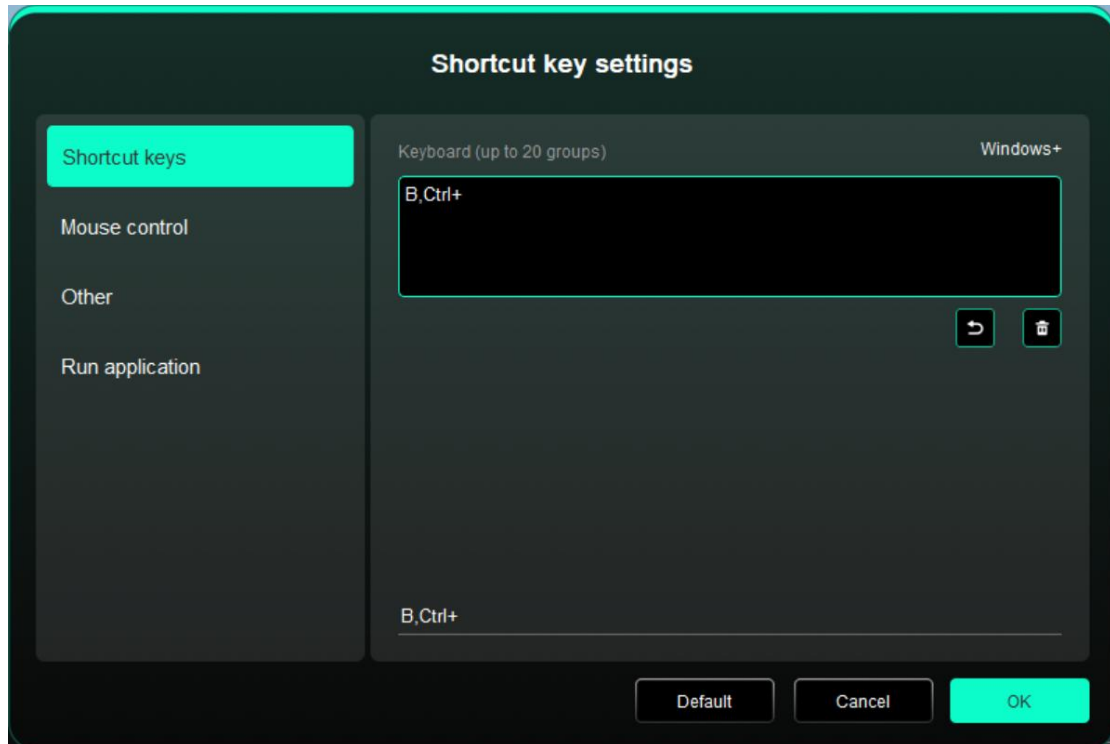
## 5. Shortcut Keys



Click the corresponding shortcut key on the device diagram to open the hotkey setting interface and customize the function Settings.



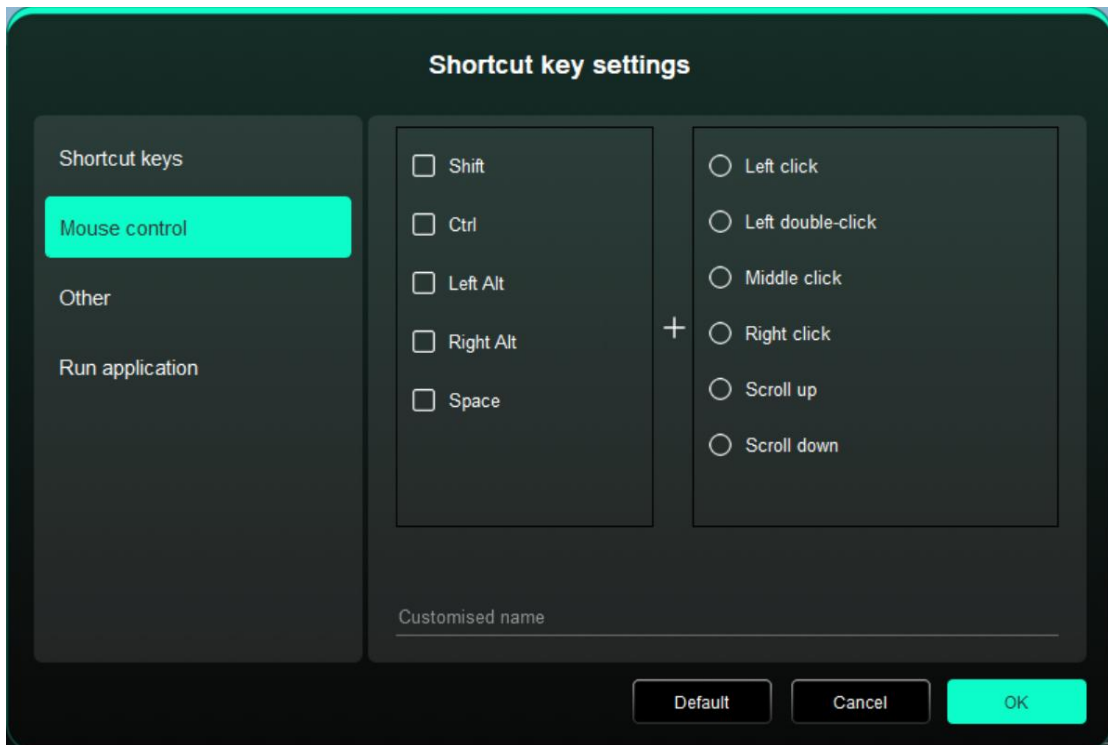
➤ Shortcut Keys



You can set the current key to the common keyboard shortcut under the application of your choice: For example, set it as Alt+A in 3D MAX, so the alignment tool can be used.

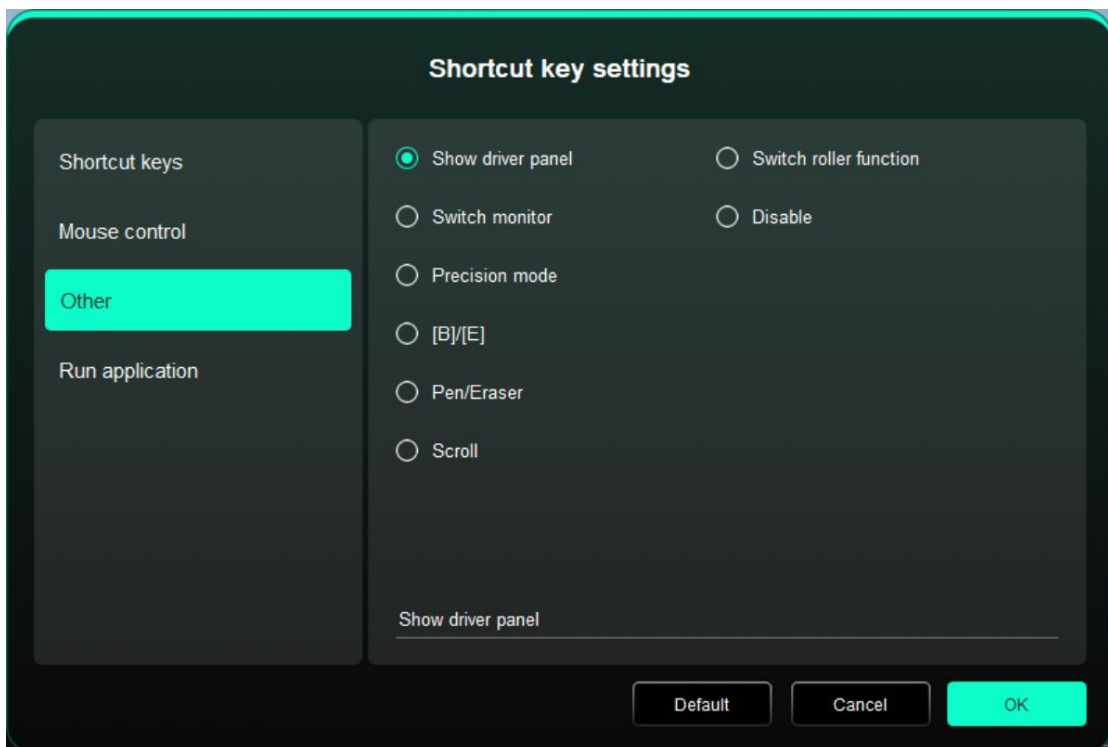
- a) Multiple shortcuts can be set with the same key: For example, type Ctrl+C/ Ctrl+V, and when you press the key, the shortcut key functions set will all run at once.
- b) When adding a key combination containing "Windows", use "Windows+" in the upper right corner instead of the system key on the keyboard: For example, if you want to type "Win(Cmd)+ Shift+3", just click "Windows+" in the upper right corner and then press "Shift+3" on the keyboard.
- c) Customized name: In the lower part of the screen, you can customize the name of the current settings.

➤ Mouse Control



Set the key combination of mouse and keyboard. With the "Shift" and "Left Click" selected, the shortcut actions can be enabled in application that supports such key combinations.

➤ Other



The current key can be set to other shortcut functions besides keyboard shortcuts and mouse:

**Show Driver Panel:** Displays the driver Settings panel quickly.

**Switch Monitor:** When there are multiple display devices, you can make the cursor map to other display devices.

**Precision Mode:** Limit the device' s work area to a certain area. This function may allow you to create more detailed drawings.

**[B]/[E]:** Function switching between pen and eraser for very few applications.

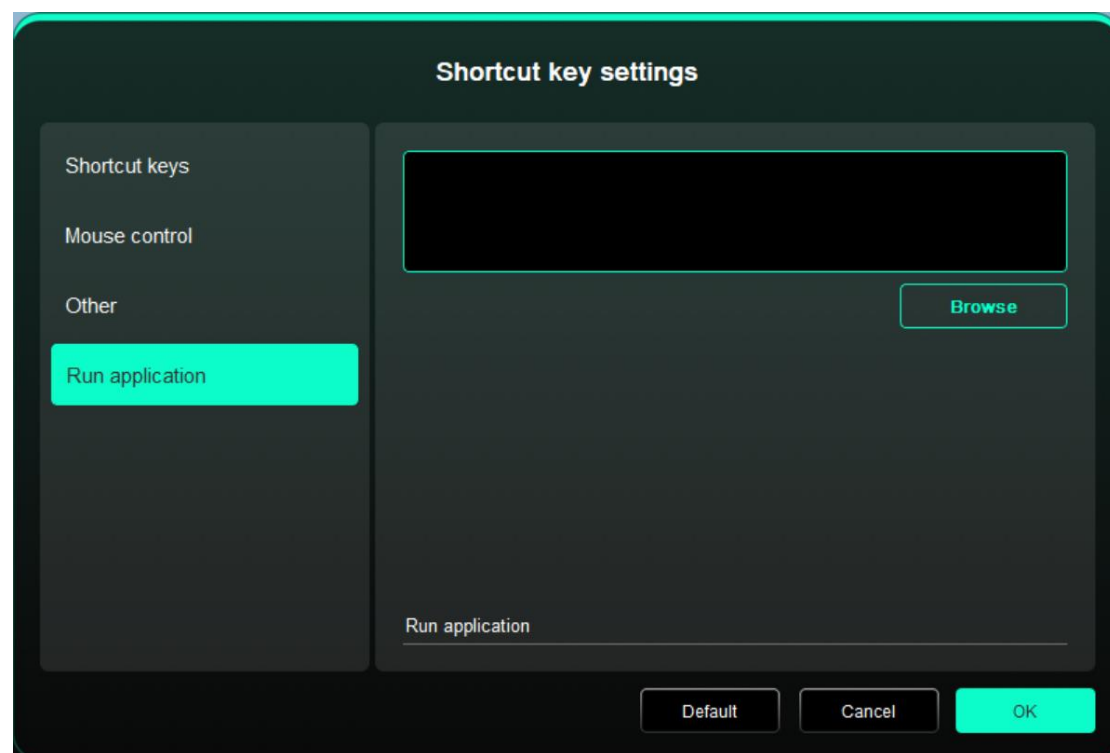
**Pen/Eraser:** Function switching between brushes and eraser for most applications.

**Scroll :** Scrolling can be performed with the pen by pressing and holding the corresponding button.

**Switch Ring1 function:** Switch the function of the roller.

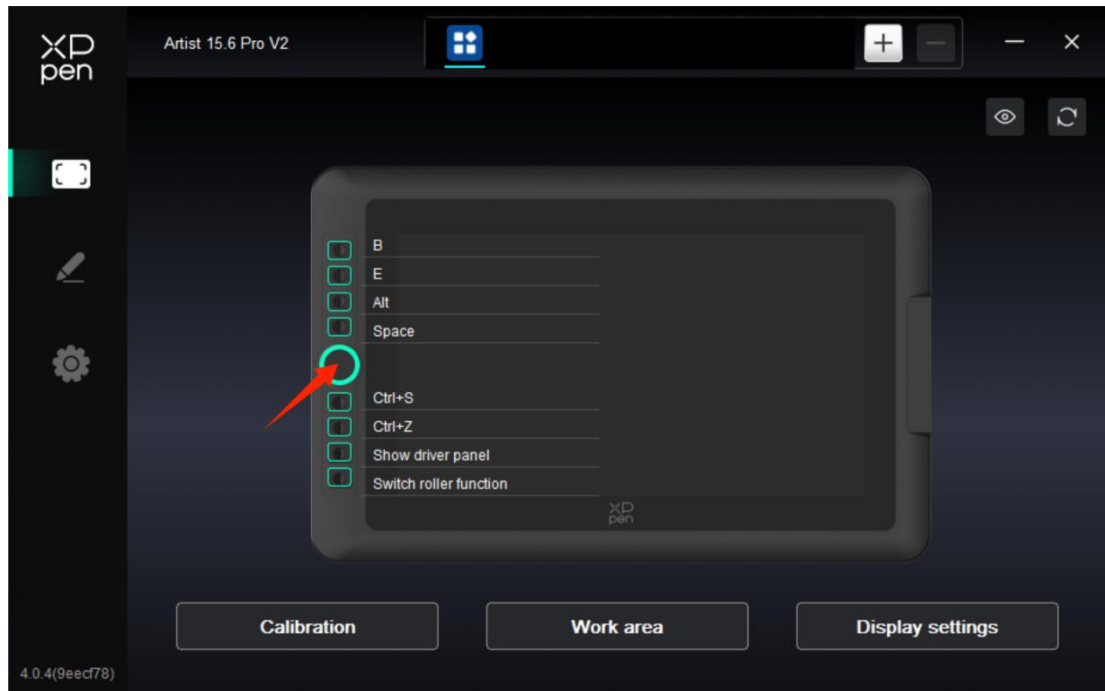
**Disable:** No function will be triggered when the key is pressed.

➤ Run application

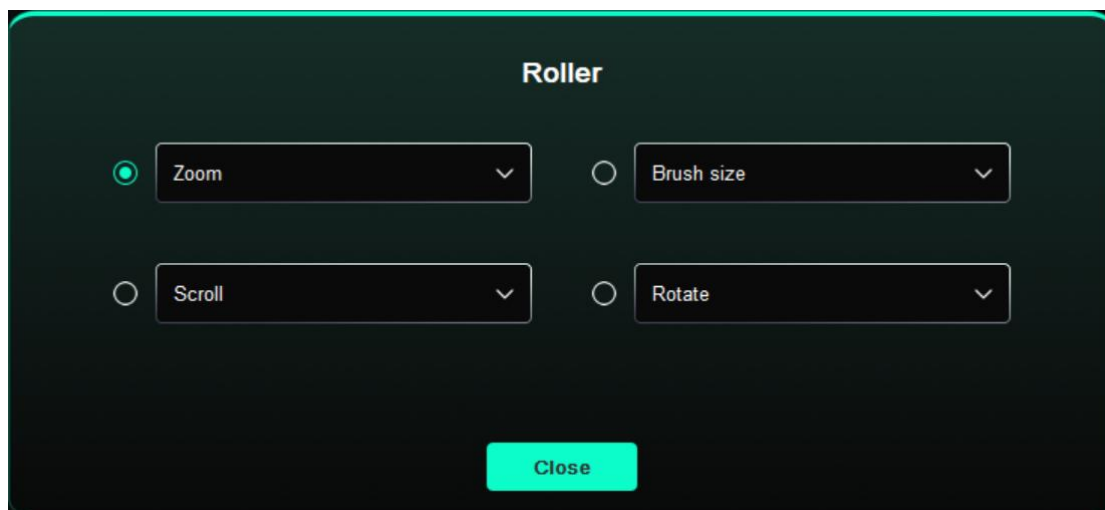


You can quickly launch the corresponding application through the shortcut key: Click Browse and select the required application, and press the key to quickly open the application.

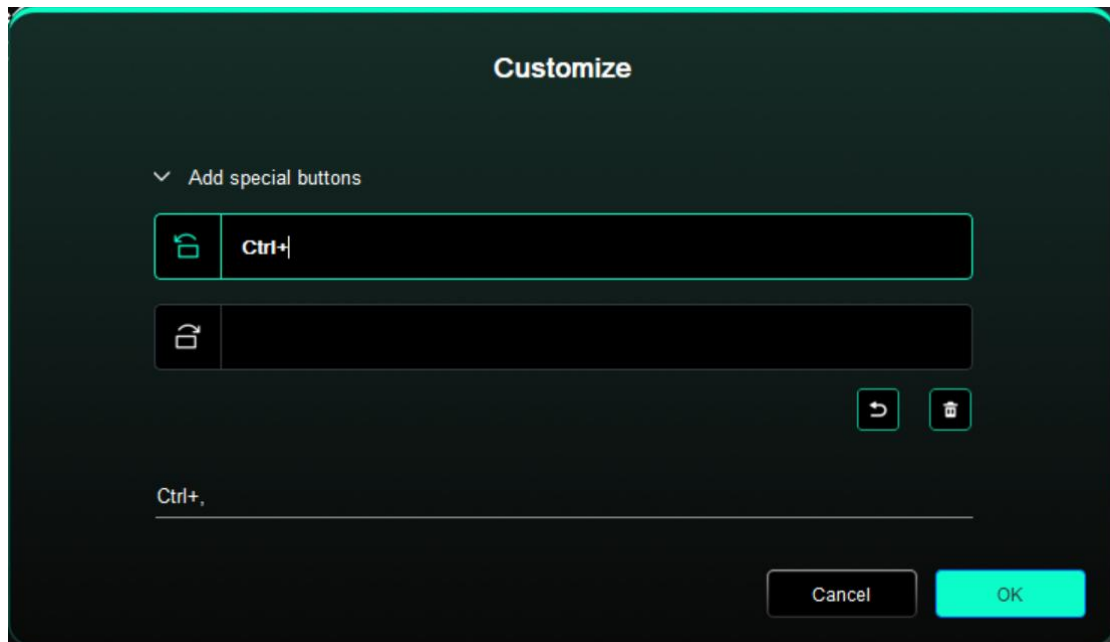
## 6. Scroll Wheel



Click on the corresponding button position on the device image to customize its function.

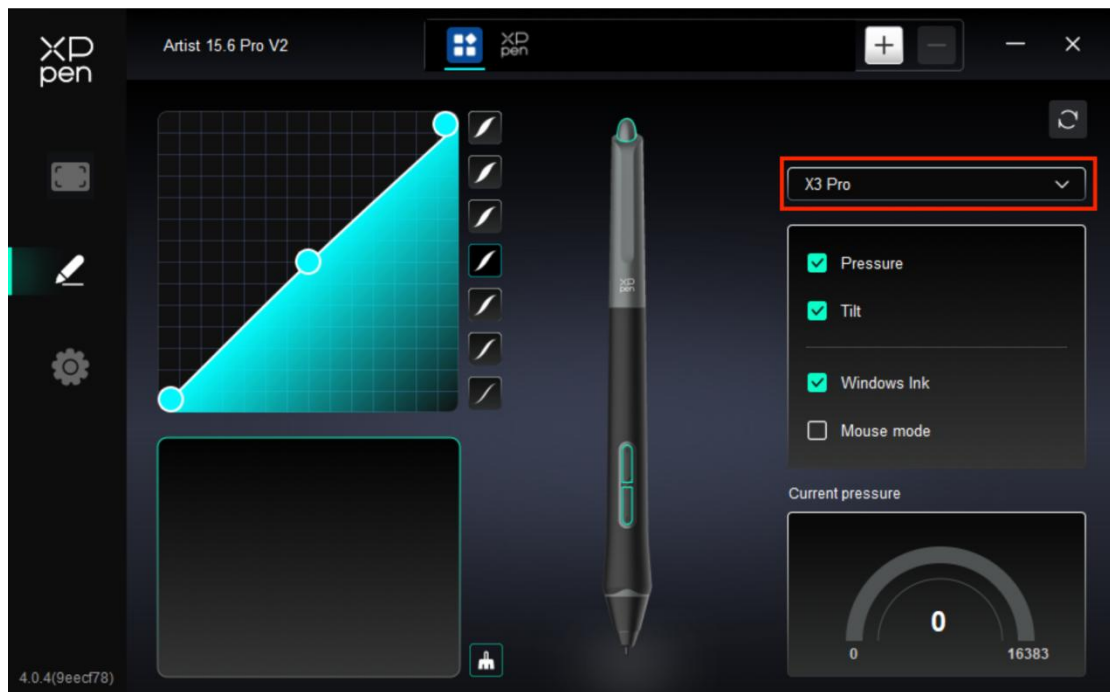


The driver enables zoom (default), brush, scroll and rotate functions.



Click Customize from the drop-down menu of each group of wheel functions, then you can type the key or key combination to be set by the keyboard to customize the wheel clockwise and anticlockwise function.

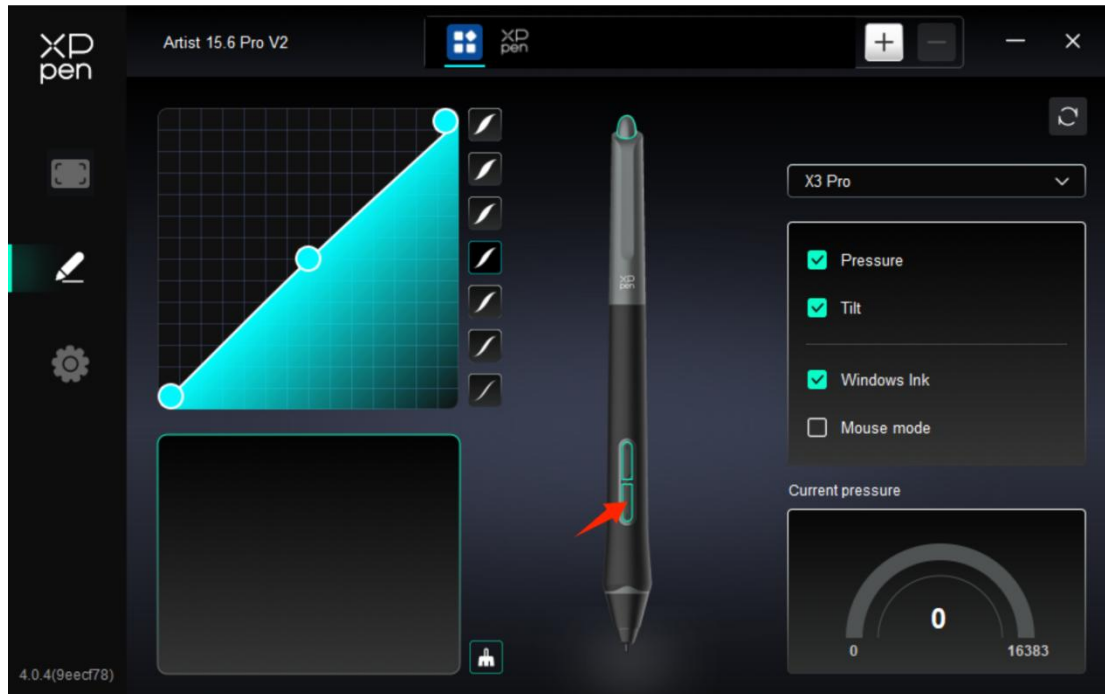
## Pen Settings



- When the stylus is within the work area, the device will recognize the stylus and add it to the driver. The stylus should be compatible with the device.
- You can click the stylus name drop-down menu on the right and select the

corresponding stylus to set the Settings. When you use the stylus, the driver will automatically switch to the stylus's custom Settings.

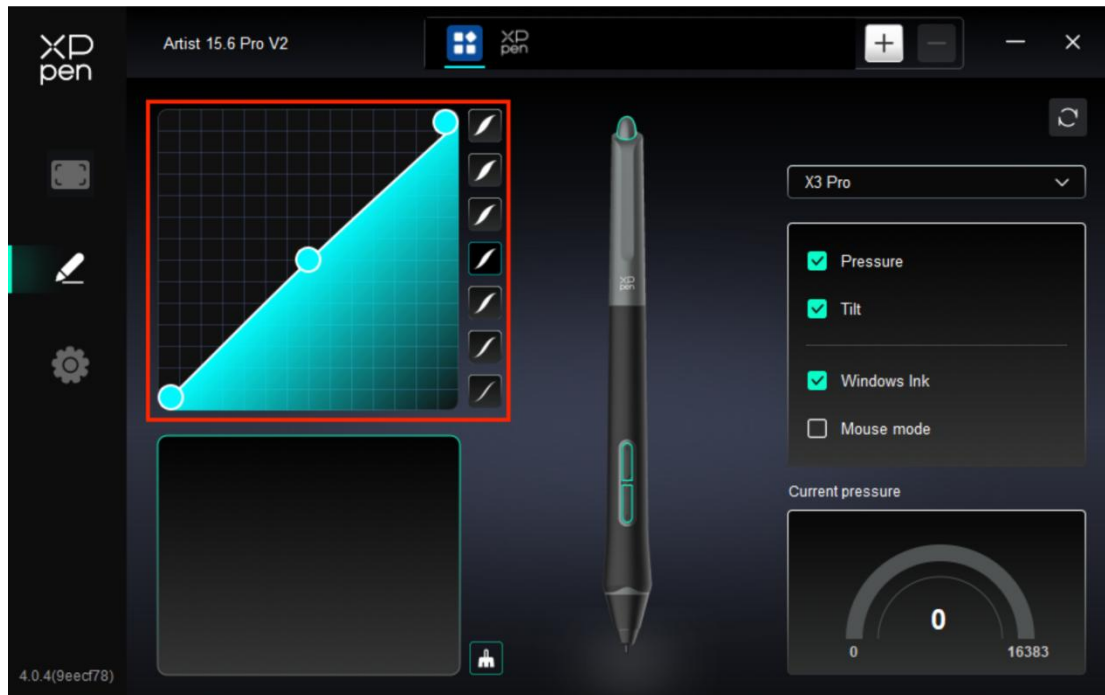
## 1. Pen Keys



Click on the pen keys position on the image and open the hotkey setting interface, then you can customize the function Settings.

**The specific operation mode of the custom function setting is the same as the operation mode of Product Settings -> Driver use -> Device Settings -> Shortcut keys above.**

## 2. Pressure



### ➤ Pressure Curve

You can adjust the pressure by manually adjusting the Pressure Curve or by clicking on Pressure Preset Options in the right column.

You can use the stylus to draw freely on the drawing board at the bottom left, helping you more intuitively feel the brush effect of the preset pressure.

### ➤ Current Pressure

Test the specific value of the pressure you generate when using the stylus currently.

### ➤ Pressure

If closed, you will not feel the pressure when using the stylus. When you use the stylus, the brush effect will not change because of the pressure level.

### ➤ Tilt

If closed, this will disable the tilt effect of the stylus.

### 3. Other

- Windows Ink (for Windows only)

If your main use of the device is painting, please do not turn it off.

If you need to use this function in Microsoft Office/Whiteboard or other software, please do not turn it off.

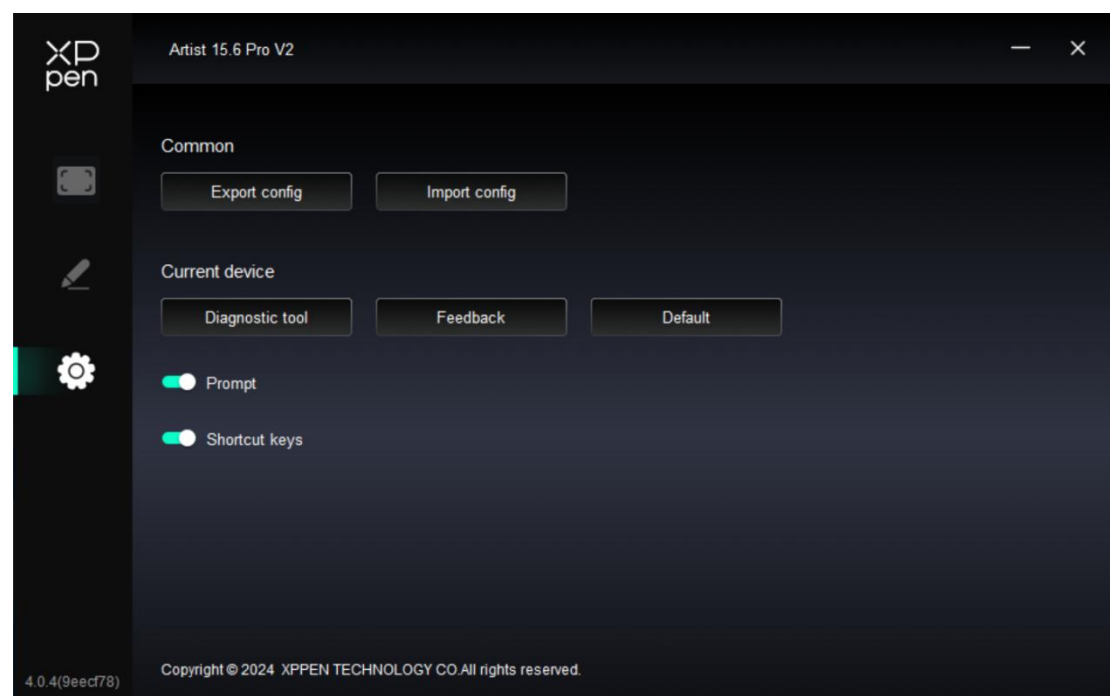
- Mouse Mode

In this mode, the stylus operates like a mouse, that is, when you lift the stylus, the cursor stays where it was when the stylus was lifted.

If it is selected, you can adjust the speed of moving the cursor on the device.

If this parameter is not selected, pen mode is used by default.

### Driver settings



#### 1. Common

- Import & Export config

You can import/export configurations to read or save settings.

This function is available for only the same operating system.



## 2. Current device

- Diagnostic tool

You can use the diagnostic tool in case of any problems while using the driver.

- Feedback

If you have any questions or suggestions during the use of the driver, you can give us feedback through this page.

- Prompt

If closed, when you press a key, no key prompt will be displayed at the bottom.

- Shortcut keys

If closed, disable the functions of all keys of the device.

## 4. Driver Uninstallation

### a) Windows

Go to Start -> Settings -> Apps -> Apps & Features, find "Pentablet" and then left click "Unload" as per prompts.

### b) Mac

Go to Go -> Apps, find XP-PenPentabletPro, click "UninstallPenTablet" as per prompts.

### c) Linux

**Deb:** Enter command `"sudo dpkg -r XPPenLinux"` and execute the command;

**Rpm:** Enter command `"sudo rpm -e XPPenLinux"` and execute the command;

**Tag.gz:** Unzip file. Enter command `"sudo"` . Drag `uninstall.sh` to the window and execute command.

## FAQ

### 1. No display or black screen on a drawing display.

1) Check if the device is connected to power supply properly.

- 2) Check if the cable is connected properly.
- 3) Check if the power indicator is blue. If not, check the cable and restart the device.
- 4) If the signal is unstable, check if the cable port is stable.

## **2. Computer fails to recognize the device.**

- 1) Check if your computer's USB port used works normally. If not, use another USB port.

## **3. Stylus does not work.**

- 1) Make sure you are using the stylus that originally came with your device.
- 2) Make sure you installed the driver correctly, and check if the pen settings of the driver is normal.

## **4. The drawing software cannot sense the pen pressure while the cursor can move.**

- 1) Check if the drawing software supports pen pressure.
- 2) Download the latest driver installation files from XPPen website, and check if the pen pressure is normal in the driver.
- 3) Before installing the driver, turn off your antivirus software and graphics software.
- 4) Uninstall drivers for other drawing displays before installation.
- 5) Restart your computer after the installation is completed.
- 6) If the pen pressure is normal in the driver (Windows: ensure Windows Ink is enabled in the pen settings of the driver), run the drawing software and test it again.

## **5. Cursor offsets.**

- 1) Confirm the mapping of the driver.
- 2) Calibrate the pen with the driver.

## **6. Line latency during drawing with the software.**

- 1) Check if the computer configuration (CPU&GPU) meets the recommended configuration requirements for the drawing software installed, and optimize related functions via settings according to the FAQs posted on the official website of the drawing software.



The terms HDMI, HDMI High-Definition Multimedia Interface, HDMI trade dress and the HDMI Logos are trademarks or registered trademarks of HDMI Licensing Administrator, Inc.